

## Grant High School Cell Phone Policy

Every student is required to secure their phone and smartwatch (on silent) in a personally assigned lockable Yondr Pouch before they arrive on campus.

Students may use the main office phone for emergency phone calls. Parents may call the school office to have a message delivered to their students in the event of an emergency.

While the Yondr Pouch is considered school property, it is each student's responsibility to bring their Yondr Pouch with them every school day and keep it in good working condition.

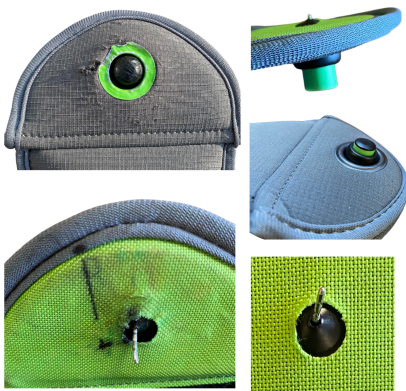
At the end of their school day, students will have access to unlocking stations to open their Yondr Pouch. Students are responsible for bringing their assigned Yondr Pouch to and from school each day.

If a student has a cell phone/smart watch outside of a Yondr Pouch, during school hours while on campus, the cellphone will be collected and held in the office. This will result in a level 2/3 disciplinary incident (see student handbook). Collected cell phones will only be released to parents/guardians.

### Pouch Damage / Lost Pouch / Forgotten Pouch / Using Phone During School

- Damaged pouches
  - Intentional Damage: will result in a \$32.00 (approximately) replacement fee, and a level 2/3 disciplinary referral.
  - Non-intentional damage: will result in a \$32.00 (approximately) replacement fee.
- Lost pouch/Forgotten Pouch: Students will turn in their cell phone at the front office, and retrieve it at the end of the day.
- Using phone during school hours: administration will collect the phone/pouch, call home for a parent pickup, and a level 2/3 disciplinary referral.

Examples of damage:



- Deep scratches on the globe and on the green ring around it.
- Intentional pen marks on the inside of the Pouch.
- Bent pins.
- Pin and button not fully recessing, due to pin damage.

If a student consistently forgets their pouch, it is considered lost. Refer to the Lost Pouch policy above.